

Spring 2024

Historical Journal



LITITZ HISTORICAL FOUNDATION

P.O. Box 65 145 E. Main Street, Lititz, PA 17543

717-627-4636

www.lititzhistoricalfoundation.com

Lititz Alleys and Lanes

Charlene Van Brookhoven

Before automobiles became the popular mode of transportation, horses were the main source of “power” not only for transporting people but also delivery of foods, goods, and services to residents in the small town of Lititz.

The breadman, the milkman, the fish monger, the iceman, and the farmers with their fresh grown produce came into Lititz to sell their wares. This was before the corner grocery stores were able to receive fresh fruit and vegetables out of season from growers worldwide. They had to rely on canned goods sold by large distributors such as Plee-Zing brand.

These deliveries were carried out door to door by a four-wheeled cart or carriage driven by a person leading a horse or in some cases two horses. At the end of the day the horses had to be fed and given a safe place to rest until the next delivery day began. Small barns and enclosures were built to accommodate these animals.

When Lititz was expanding from the original Moravian community and more homes were needed to accommodate the growing number of families, alleys were added to the streetscape to conceal small buildings and trash, including barns, from the main roadways.

Many of the skeletons of these structures can be found when exploring the older areas of Lititz. Through the years, a number of homeowners added on to or modernized the original barns and some have been destroyed altogether. New “garage” doors cover the entrances which were built for horses, wagons and delivery equipment.

The United States Postal Service gave street addresses to all the alleys in Lititz to make navigation much simpler for residents and visitors. Sometimes it is difficult to determine the origin of the given names; but, alleys such as Stark Lane, Rodney Lane, Seaber Lane and Amer Lane are named for one-time residents. Raspberry Lane, Juniper Lane and Lockup Lane all have valid meanings when formal names were added.



Above: One of the many beautiful barns that can be found throughout Lititz. Story continued on page 5 inside.

Whiskey & History Tours are back for 2024!

Board of Directors:

Cory Van Brookhoven
President

Tom Oehme
Vice President

Tom Wentzel
Secretary

David Orr
Treasurer

Directors:

Michael Caldwell

Jerry McDonald

Gail Horrocks

Tom Clouse

Dan Gwinn

Bill Oehme

Robin Roumeliotis

Newsletter Editor:

Cory Van Brookhoven



This popular tour is back this year! Tours are offered every other Saturday, March through October.

Through personal stories and beautiful architecture, Lititz, Pennsylvania's heritage and unique past will come alive as you travel from one end of historic Main Street to the other, learning about over 25 historic structures along the way, many of which date back to the 1700s.

Some of the many places you will see include:

- America's first commercial pretzel bakery
- Lancaster County's first pharmacy
- The location of Lititz's first bank
- A former Revolutionary War Hospital

Visitors will then visit Stoll & Wolfe Distillery, where they will enjoy a guided tasting of three local whiskeys. Guests will also learn about the whiskey and distilling history of the Lititz area. This tour is for ages 21 and over. To book, visit the **BOOK NOW** button on our web www.lititzhistoricalfoundation.com



Ghost Tours of Main Street also return!

Founded in 1756, the historic town of Lititz, Pennsylvania, is the location of several ghost stories and paranormal happenings. You will journey down Main Street with your knowledgeable guide as you discover these tales and see many structures associated with them along the way. Some of stops along the tour include:

- A haunted tavern from the 1700s
- The location of a mysterious grave in the basement of a store -
- A former Revolutionary War hospital that is said to be haunted by at least one spirit
- An authentic corpse house built in 1786

This is a family-friendly tour suitable for all ages
Visit our website to book! www.lititzhistoricalfoundation.com

Spring 2024

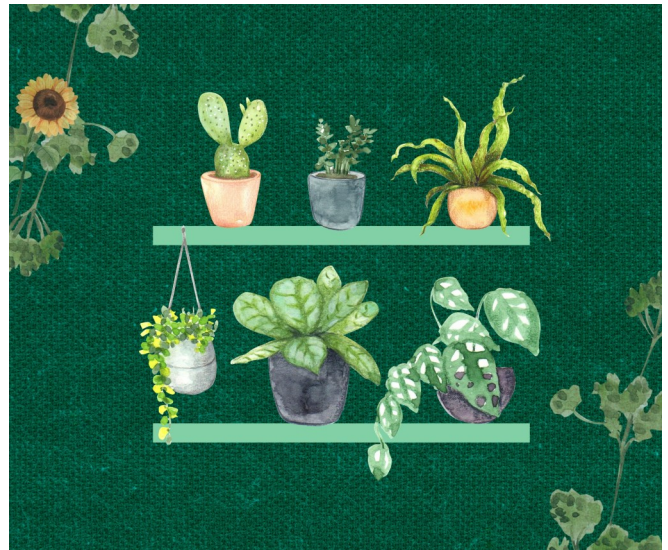
HISTORICAL JOURNAL

Annual Plant Exchange is April 28th

The Lititz Historical Foundation in conjunction with the Lititz Garden Club will hold its Annual Plant Exchange on Sunday, April 28th at 1:30 PM. The event will be held in the Mary Oehme Gardens, behind the museum buildings at 137-145 East Main Street in Lititz.

The event is rain or shine.

The plants to exchange must be perennials and must have identification tags. Each plant must be placed in a container for transportation. Upon arrival, a ticket will be handed out for each plant. The plants must be placed in categories including: Sun, Shade, Exotic, Bulbs, Herbs and Ground Cover. These tickets can be redeemed for another plant after all plants are placed in the categories and the attendees have some time to explore the categories.



Second Annual Community Yard Sale is May 11th

25 Vendors! Rain or shine!

Search your attic, basement, and closets and turn your unwanted items into CASH at our Community Yard Sale on May 11th! Or attend as a shopper and walk away with some great deals!

This event will be held in the Mary Oehme Gardens, located behind 137 East Main Street, in the heart of downtown Lititz from 7am-12pm. This is a fundraiser for the Lititz Historical Foundation.

\$20 per space. Scan the bar code to the right to reserve your vendor space.

Spaces are limited! Each space equals room for a 6-foot table, which vendors must bring. Email info@lititzhistoricalfoundation.com or call 717-627-4636 with questions.



Free parking is available in front of the historical foundation. There is also a free lot along Water Street, behind the Lititz Ambulance building, which is steps from the event!

While you're there, be sure to visit the Lititz Historical Foundation's museum and gift shop.

2024 Summer Concert Series

Save the dates! Our first concert will take place on Sunday, June 23rd and will feature Temple Avenue, a Lancaster-based jazz ensemble that was formed a dozen years ago by pianist Colin Mekeel, who was then a junior high school, and his friends enrolled in Temple University's prestigious jazz program.

Today the group plays concerts, dances, receptions, church services and other events in southcentral Pennsylvania. The musicians now are 20-somethings and 30-somethings. And true to its roots, many of them are Temple grads.

All concerts are pay what you can, with 100% of the donations going towards the further beautification of our Mary Oehme Gardens. We wanted to give a big THANK YOU to Tiger's Eye in downtown Lititz for sponsoring our 2024 Summer Concert Series.



in

to

Right: Temple Avenue will perform in the Mary Oehme Gardens on Sunday, June 23rd



Spring 2024

HISTORICAL JOURNAL

Lititz Alleys and Lanes Con't:

During the years when Lititz was a small PA Dutch/German community, alleys were of major importance to the everyday lifestyle of its residents.

The amount of traffic “galloping” through town today was unheard of during the days of horses and wagons. A quiet, carefree stroll on the lesser-known back streets in Lititz will reveal the barns and outbuildings which were once part of a much simpler lifestyle.

Right and below: A few of the remaining barns in the alleys of Lititz. Many more are waiting to be discovered by curious explorers. Below center: A Lititz deliveryman makes his way through town.



DID YOU KNOW...?



Seen here is a real photo postcard early 1900s view of East Main Street. The view is looking west, and back when Lititz had dirt roads.

P.O. Box 65 145 E. Main Street, Lititz, PA 17543
 RETURN SERVICE REQUESTED

Historical Journal
 Lititz Historical Foundation's

